

Installation and care instructions – compact version **MEISTER**

Meister Rigid-Vinyl / MeisterDesign. rigid design flooring with Multiclic technology

Preparatory measures, substrates and general instructions



Video tutorial for Multiclic

Preparation

Before opening the packages, leave them to acclimatise until they have adjusted to room temperature. Store them unopened and lying flat on the ground for approx. 24 hours (in winter 2 days) (Fig. 1) in the centre of the room you want to work in. Do not store the packages in front of damp or freshly wallpapered walls. Before you install the flooring, outer doors and windows must be installed and all painting and decorating work must be finished. The room temperature must be approx. 20°C (at least 15°C), and the relative humidity must be approx. 30–65 per cent.

The substrates must be considered as ready-to-lay in accordance with the generally accepted rules of the trade, taking into account VOB (German Construction Contract Procedures), Part C, DIN 18 356 »Parquetry work« or DIN 18 365 »Floor covering« respectively. Therefore, they must be dry, even, solid and clean. Any subfloor unevenness of three or more millimetres for each initial metre and two or more millimetres for each subsequent continuous metre must be evened out according to DIN 18 202, table 3, line 4 (Fig. 2). We recommend consulting technical information sheet 02 from the Zentralverband für Parkett und Fußbodentechnik (Central Association for Parquet Flooring and Flooring Technology) and the BEB (German Federal Association of Screed and Floor Covering).

For Meister Rigid-Vinyl / MeisterDesign. rigid, joints in old ceramic subfloors wider than 10 mm and more than 2 mm deep (Fig. 3) must be levelled using suitable filler materials.

The residual humidity, measured using the CM method, of mineral subfloors / construction site screed must be no more than 2 per cent (1.8 per cent for underfloor heating) and that of anhydrite screeds must be a maximum of 0.5 per cent (0.3 per cent for underfloor heating) (Fig. 4).

The limit values when carrying out the CRH method are 80 per cent relative humidity for unheated screeds and 75 per cent relative humidity for heated screeds (TKB briefing sheet 18; DIN EN 17668). For installation over underfloor heating systems or underfloor heating systems with cooling function, separate information sheets are available.

Textile flooring such as carpet or needle fleece must be removed not only for technical reasons, but for hygiene reasons, too (Fig. 5).

On existing PVC, wooden planks, wood-based boards, OSB boards, prefabricated screed, etc., no vapour barrier must be used (Fig. 6 + 7).

No additional insulating underlay may be used with MEISTER floor coverings with integrated insulating underlay (Fig. 8).

With all floating MEISTER flooring, we recommend installing any heavy objects or fitted furniture (such as kitchens or kitchen islands) prior to laying the flooring and only laying it up to just below the skirting (Fig. 9).

If the floor area is longer or wider than 15 m (Fig. 10), you must provide an expansion joint. Meister Rigid-Vinyl / MeisterDesign. rigid and can be installed in doorways without transition profiles. (Expansion joints from the subfloor must be incorporated). Cover this with a transition profile. Always use a jointing profile for clean transitions to adjacent, lower areas or floor coverings and an end profile next to higher adjacent thresholds, tiles or the like. Give stairs a clean finish with the stair edge profile.

The Meister Rigid-Vinyl / MeisterDesign. rigid design flooring can also be installed in humid rooms (Class WO-I, e.g. bathrooms). They are not suitable for installation in outdoor areas or wet rooms such as showers, saunas, public washrooms or rooms with a floor drain (Fig. 11) – see separate briefing note.

All MEISTER floorings are suitable for installation in home conservatories (Fig. 12).

Shading and ventilation systems must be used to avoid strong sunlight and prevent the flooring from heating up. It is important to maintain a suitably consistent temperature for the living space all year round. The surface temperature of the floor must not permanently exceed 29°C – see separate briefing note.

Before installation, check all planks in daylight for recognisable faults and damage, as well as colour and structure (Fig. 13).

Arrange the planks before laying so that you achieve the floor pattern and colour you want (Fig. 14). You cannot make a claim for any products you have already installed.

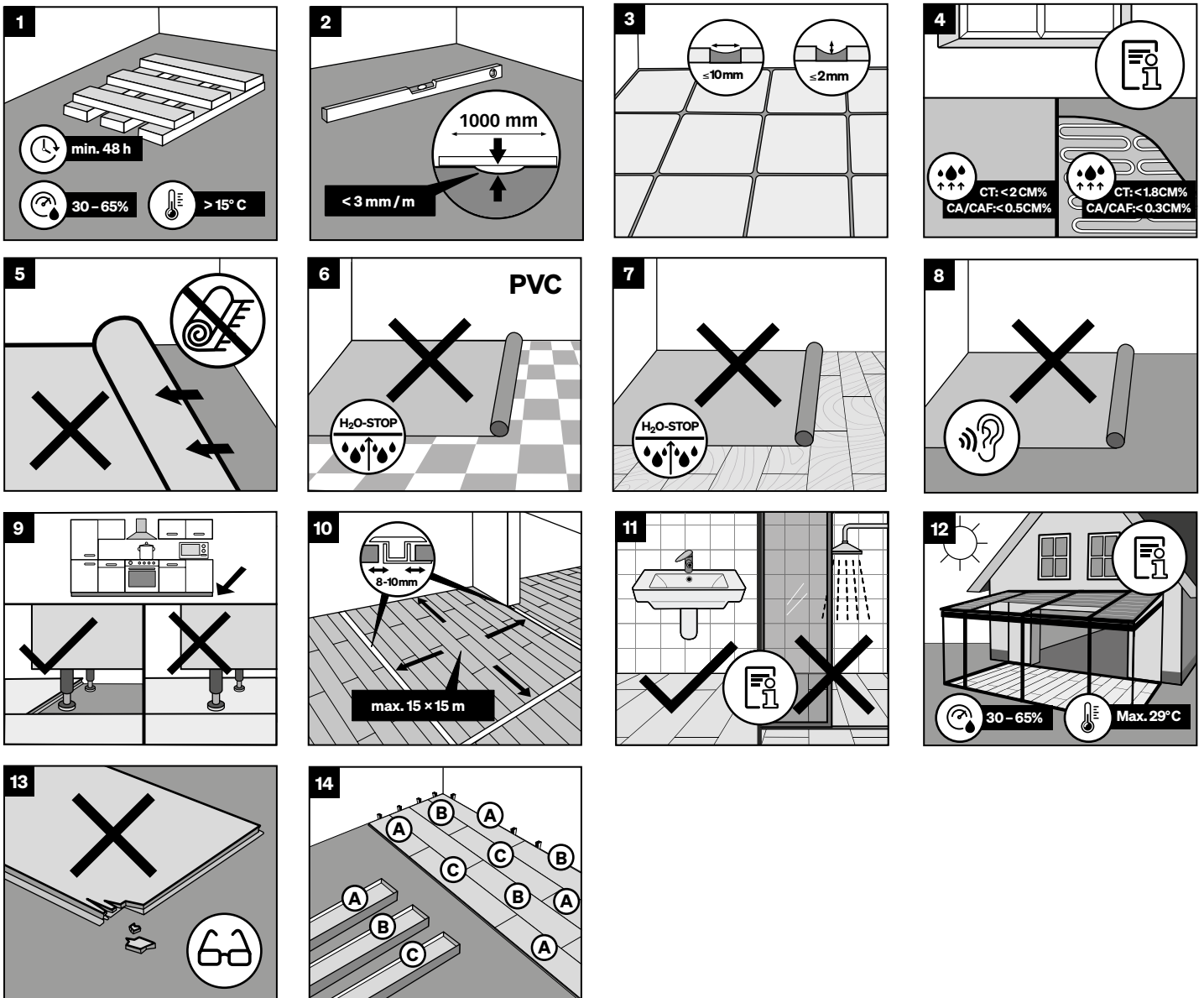
Precautionary measures

To protect the wood from dirt, a sufficiently large entrance covering must always be laid (such as a doormat or carpet) (Fig. 15). Do not use any rubber-coated mats, since prolonged contact can lead to permanent discolouration, especially in design flooring.

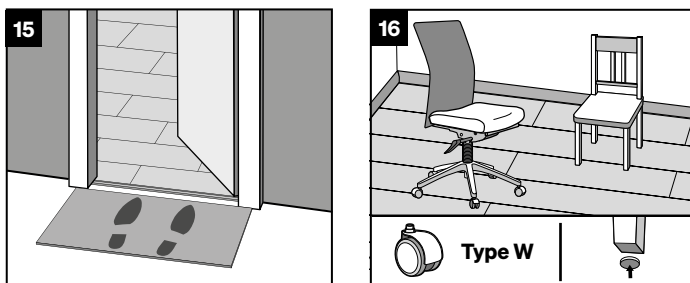
In addition, you should also fit chair and furniture feet with felt sliders; office chairs, mobile containers, etc., on castors must be equipped with soft, standard running surfaces (type W) (Fig. 16).

Coloured rubber, natural rubber or plastic glides and castors as well as dark car, bike or equipment tyres may possibly cause discolouration on design flooring. Please only use light, non-migrating furniture glides, castors or tyres, if possible.

Preparation



Precautionary measures



Installation



Fig. 1

You need the following tools and aids for installing Meister Rigid-Vinyl / MeisterDesign. rigid design flooring with Multiclic technology:

Hammer, installation knife with trapezoidal blade, keyhole or electric saw, possibly power drill, folding metre rule, pencil, wedges (spacer wedges), heel bar, angle or adjustable bevel, MEISTER 5 mm tapping block.

If the product does not already feature a Silence backing, you must use the system-oriented MEISTER insulating underlay SilenceCompact (CS value > 400 kPa) as a cushioning layer. Other types of insulating underlay must meet the increased requirements in accordance with the technical bulletin "TM 1" from MMFA for Class 2 (polymer) floor coverings.

The flooring is installed as a floating structure without glue. The specially designed click connection allows quick and easy installation. Two different installation options are available to choose from. Option 1: Angle in the head end and long side; Option 2: Angle in the long side and join the head end using the MEISTER 5 mm tapping block and several light taps with the hammer.

Fig. 2

Remove any dirt, small stones, etc. from the surface prior to installation.

Fig. 3

Before installation, check all planks in daylight for recognisable faults in colour and structure. Goods already installed cannot be claimed for later.

Fig. 4

Install a mixture of planks from different packages. You can score the planks with an installation knife (trapezoidal blade) once or twice and then fold them down. Sawing with a jigsaw or portable circular saw or snapping with a guillotine cutter is also possible. When sawing the elements, make sure you work from the correct side: if you use a bench saw, keep the decorative side facing up, if you use a keyhole or portable circular saw, keep the decorative side down.

Fig. 5

Start by laying the first complete plank in the left-hand corner of the room with the tongue sides facing the wall. Saw the tongues off the first plank, both on the short and the long side. Remove only the tongues on the long sides of all the other planks you want to lay in the first row.

Fig. 6

Using wedges, you can easily keep a gap of at least 10 mm from the wall.

Fig. 7

Angle the end of the next complete plank into the end of plank 1. Install the other planks in this row in exactly the same way across the entire width of the room.

Fig. 8 – Fig. 10

The last planks in each row are cut to size so that a gap of 10 mm to the wall is taken into account. You can score the planks with an installation knife (trapezoidal blade) once or twice and then fold them down. You can use cut-off pieces of planks to start subsequent rows.

Option 1

Make sure that the planks in the first row are straight. Cut the first plank of the second row down to approx. 80 cm (50–60 cm for MeisterDesign. rigid RB 400 S).

Fig. 11

Angle the head end of the next complete plank into the end of the previous plank.

Fig. 12 + Fig. 13

Once you have angled in all of the planks in a row, angle them into the previously laid row and press them down slowly using a forward and downward turning motion. The row of planks has to click into the previously installed row. Alternatively, you can angle in the head end of each individual plank first and then connect the long side by slightly raising it and angling it into the previous row. Continue installing the panels row by row in this way.

Option 2

Fig. 15

Cut the first plank of the second row down to approx. 80 cm. Angle this plank with the tongue into the groove side of the previous row of planks and press the plank down slowly using a forward and downward turning motion. The plank has to click into the previously installed row.

Fig. 16

Again, angle the next complete plank of the second row first on its long edge against the previously laid row. Make sure the long joint is always tight.

Fig. 17

Once you have angled in the plank so it lies flat on the subfloor, click the head ends together using the MEISTER 5 mm tapping block and light taps with the hammer. Continue the installation row by row in this way.

Fig. 18

Remember that the end joints must always be offset by at least 30–40 cm (or, for MeisterDesign. rigid RB 400 S, 25 cm).

Fig. 19 + Fig. 20

The last planks in each row are cut to size so that a gap of at least 10 mm to the wall is taken into account. Lay the plank with the tongue side facing the wall to mark the remaining plank width.

Fig. 21

Start by laying the last row in the right-hand corner of the room and angle the long side of the plank into the second-last row.

Fig. 22

The next plank is angled in along the long side and lowered down in the same way. The shortend connection is then established with the help of a heel bar and several light taps with the hammer.

Fig. 26

Next, remove the wooden wedges from around the walls.

Fig. 27

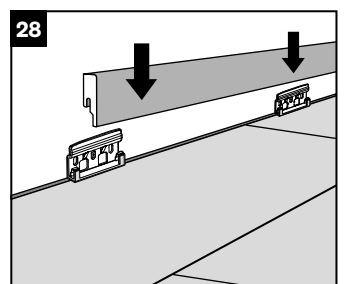
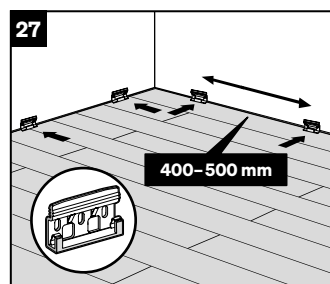
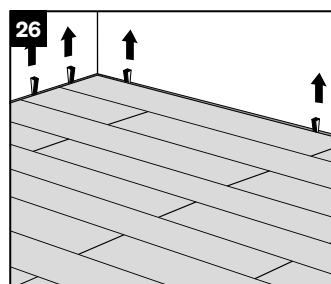
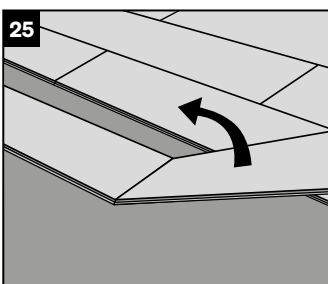
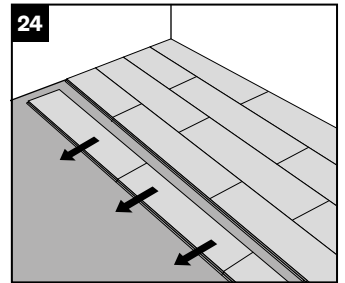
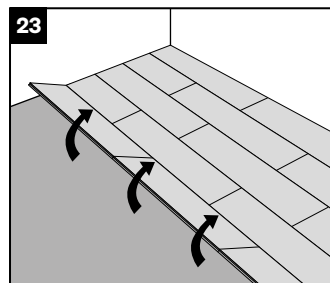
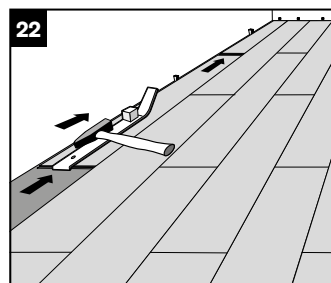
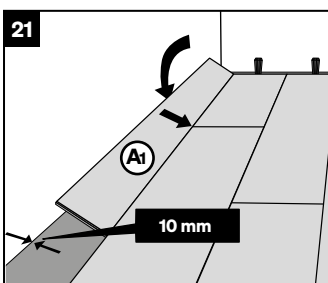
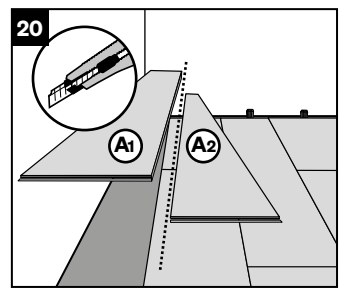
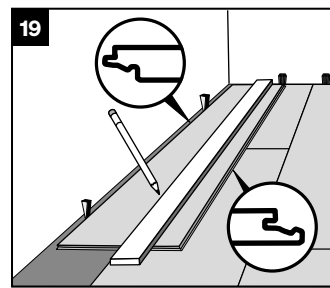
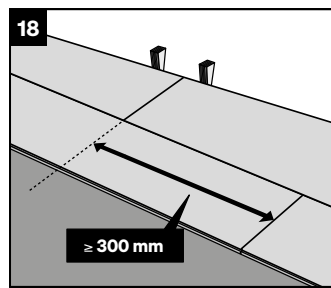
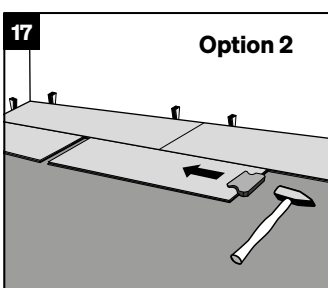
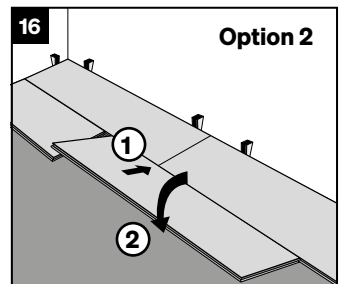
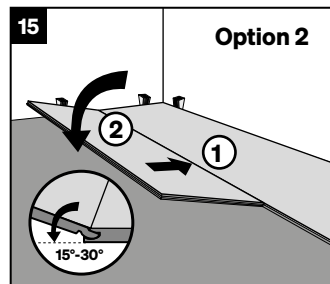
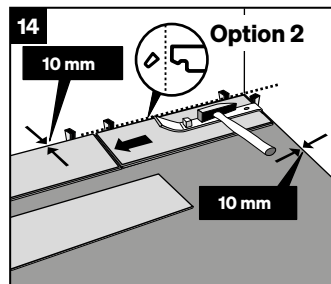
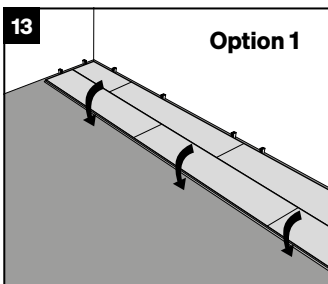
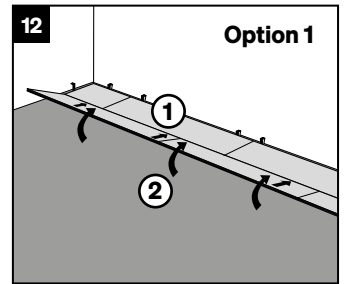
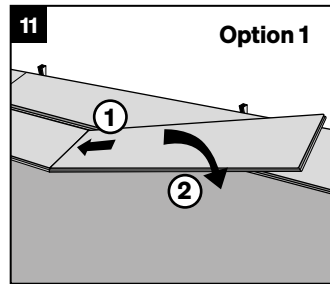
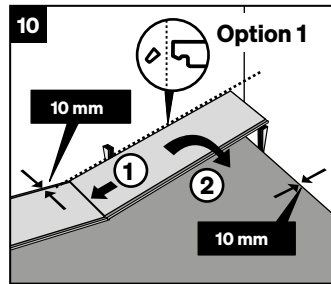
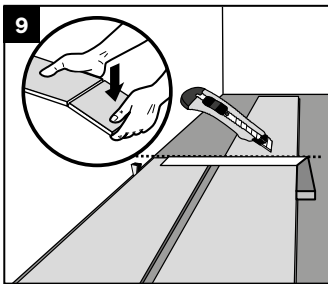
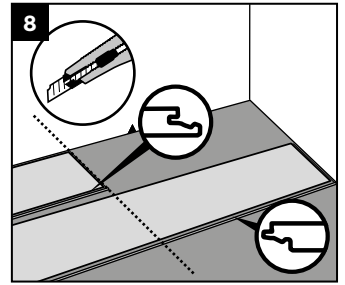
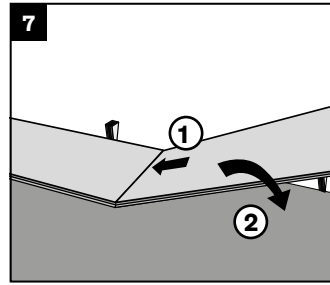
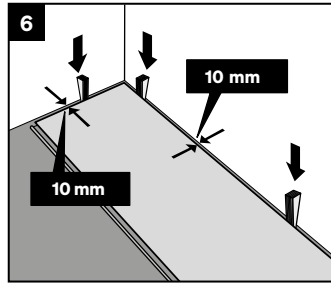
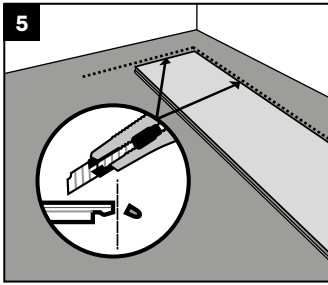
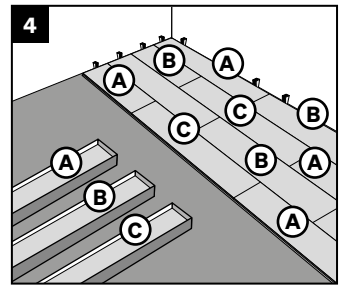
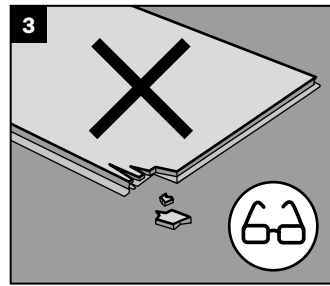
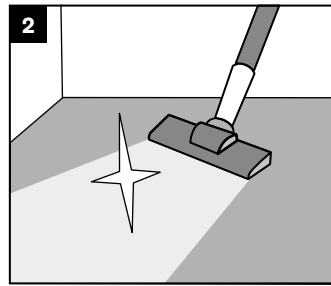
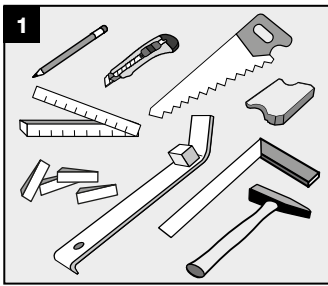
Screw the skirting board clips to the wall at intervals of 40–50 cm. To ensure that the skirting board fits tightly, do not position it on an uneven wall.

Fig. 28

The skirting board is placed on the clip from above and pressed down. For the length joints of the skirting boards, the clip is placed on the joint with a half overlap to ensure a good hold. Please avoid bringing any silicone products into contact with the skirting boards.

Fig. 23 – Fig. 25

To take a plank row back out again, lift the entire row, levering it at the side out of the last row. You can then separate the short ends of the planks by angling them. This way, the locking system remains intact and the planks can be refitted.



Cleaning and care

The quality does not stop with the installation.

You have bought a quality product “made in Germany”. These cleaning and care instructions will provide you with all the information important to ensuring a long period of value preservation and a beautiful appearance of your flooring. With a bit of time and effort, you can contribute to ensuring that you are able to enjoy your new MEISTER flooring for a long time to come. MEISTER products are based on selected materials, which are processed by experienced experts with state-of-the-art technology to create a quality product “made in Germany”. The premium quality includes substantiated consultation and excellent service. For this reason, you will only find MEISTER products in selected specialist shops.

1. The right care

Your dream floor also needs the right care. MEISTER complements its product range with a high-quality series of care products from Dr. Schutz. Cleaners and care products, tailored for the floorings, ensure that your floor looks good in the long term. Even if you only need to run the vacuum round for day-to-day care (to remove loose dust), the surfaces should be cleaned and cared for regularly with Dr. Schutz care products to preserve the value of your floor. When cleaning, please be aware that the floor must only ever be slightly moistened. In the ideal case, the film of water should be a thin mist, so that it dries out after about a minute. You should not use any abrasive cleaners, even in case of more severe stains.

Scratches on the floor not only affect the overall appearance. They will also make the floor more prone to dirt and moisture. The Dr. Schutz care products are designed to ensure that the floor is considerably more resistant to signs of wear and tear in heavy wear areas.

Your qualified specialist shops will also be able to provide you with more tips on how to care for your MEISTER floor in the best possible way.

2. Preservation of value / Precautionary measures

A room temperature of approx. 18–22°C and a relative air humidity of approx. 30–65 per cent will contribute to your personal well-being and are the basis for a healthy room climate. This type of room climate helps to ensure the optimal conditions for your MEISTER floor.

The introduction of dirt onto the floor:

Most dirt is brought into your home from the outside and transferred onto the flooring. For this reason, we recommend installing a sufficiently large entrance covering (such as a doormat) in the entrance. Do not use any rubber-coated mats, since prolonged contact can lead to permanent discolouration.

Please consider that dirt, such as sand or small stones, will act like sandpaper on all floorings and can lead to unsightly scratches. To protect the wood from scratches, you should also fit chair and furniture feet with felt sliders; office chairs, mobile containers and similar on castors must be equipped with soft, standard running surfaces (type w). Coloured rubber, natural rubber or plastic glides and castors as well as dark car, bike or equipment tyres may possibly cause discolouration on design flooring. Metal gliders can corrode if they come into contact with moisture, potentially leaving stains on the flooring. Please only use light, non-migrating furniture glides, castors or tyres, if possible. Terracotta or clay flower pots/planters can also cause discolouration. Please use suitable, non-migrating mats.

3. Cleaning after completion of construction work

Newly laid MEISTER floors must be cleaned after completion of construction work and before first use in order to completely remove any dirt that has collected during the course of the installation.

You should clean **MeisterDesign design flooring** after completion of construction work with Dr. Schutz PU Cleaner*, diluted with water in a ratio of 1:10.

Clean the floor using a well wrung out mop and then neutralise with clear water.

Cleaning and care

4. Day-to-day cleaning

MeisterDesign design flooring

Loose dust and dirt is removed by vacuuming or sweeping.

Depending on the frequency and degree of dirt, the removal of bonded dirt should be carried out with Dr. Schutz PU Cleaner*, which is diluted with water at a ratio of 1:200. The floor should be damp mopped using a lint free mop, which has been dipped in this solution and wrung out well. Remove stubborn stains and heel marks with undiluted Dr. Schutz PU Cleaner* and a cloth or non-scratch, white pad. Then wipe the floor with clear water. A thorough clean of the floor is required to remove particularly stubborn dirt and residues and to prepare the floor for treatment with a care product in case of visible signs of wear. For this, evenly spray Dr. Schutz Deep Clean* undiluted on the floor and after allowing it to take effect for a short while (max. 5 minutes), scrub with a green pad or scrubbing brush. Wipe away loosened dirt using a cloth and wipe over again using clear water until all dirt and cleaner residue has been completely removed.

Note: If the flooring is not to receive a care treatment afterwards only use scrubbing brushes instead of green pads.

If there are signs of wear on the surface after long or intensive use, this can be refreshed with intensive maintenance after thoroughly cleaning the floor with (Dr. Schutz Deep Clean*). To do this, apply undiluted Dr. Schutz Full Care Matt* thinly and evenly in a lengthwise direction with a lint-free mop rinsed in clear water and wrung out well.

When the protective film can be walked on (after 45 minutes), apply a second coating in the crossways direction. Use: 750ml for approx. 25 – 35m² per application.

If the protective film is worn away over the course of time, this can be refreshed with intensive maintenance after thoroughly cleaning the floor with Dr. Schutz Deep Clean*. In **commercial areas**, cleaning should always be possible using a cleaning machine or spray cleaning process with a disk buffing machine as well as separate value conservation measures. Please contact our technical customer services in case of application.

5. General information about cleaning and care

Never leave MEISTER flooring moist or wet over a long period of time. When cleaning, always try to use a dry method if possible (using a mop, hair broom, vacuum cleaner), or only damp mop (using a wrung-out lint-free cloth) and do not leave any 'puddles' on the floor. Steam cleaners are not suitable for the flooring. Do not use any cream cleaners, scouring powders, sanitary cleaners or harsh solvents, as these agents can attack the surface of the floor. Please only use suitable cleaners.

All kinds of chemicals, such as solvents, antiseptics and disinfectants, hair dye, fats, nail varnish remover, acetone, felt pen or ballpoint ink, many cause permanent stains.

**Water-based care products (e.g. polymer dispersions) can penetrate the seams of the planks in the case of improper adhesion or incomplete jointing, leading to swelling of the base material.*



You can find the full installation and care instructions at: <https://www.meister.com/en/service.html>